



A Polyhydron Group Company

PILOT OPERATED CHECK VALVE MODULAR CONSTRUCTION

Model : CIM10 **

Ref. No. D 52200A
Release: 04 / 2015

ENGINEERING - 1 of 2

Description

Modular pilot operated check valves series CIM10** provide pressure holding facility on their service ports A1 and B1.

These valves are also available with pilot check facility on either A or B port. The valve opens and allows free return flow, when the other working port is pressurized.

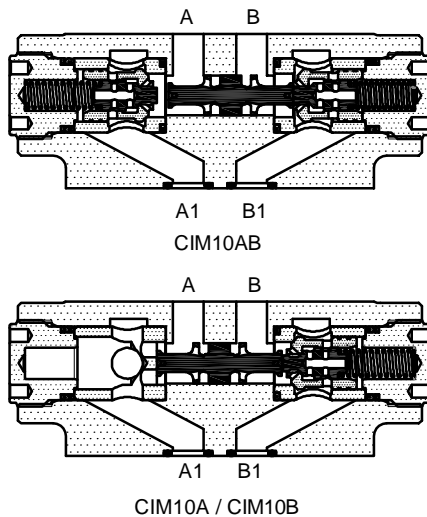
The valve is not suitable for holding pressure on rod end side of Double acting cylinders, where area ratio (Bore area : Annulus area) is equal to or greater than 3.5.

The modular construction facilitates use of these valves in a vertical stack, eliminating need of piping.

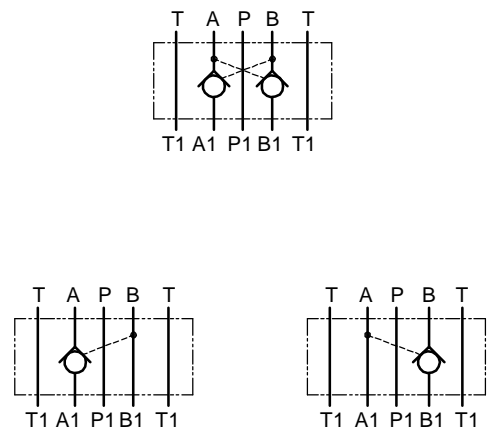
The interface conforming to ISO-AC-05-4-A, IS 10187, DIN 24340.



Section



Hydraulic symbol



Technical specifications

Construction	:	Modular, Seat type, Internally pilot operated.
Mounting style	:	Modular type conforming to ISO 4401-AC 05-4-A , IS 10187 , DIN 24340.
Mounting position	:	Optional.
Flow direction	:	Free flow from A to A1 and / or from B to B1.
	:	Piloted flow in opposite direction.
Cracking pressure	:	1, 3 or 5 bar.
Working pressure	:	315 bar for all Ports.
Area ratios	:	Pilot piston : Decomp. poppet = 3.5 : 1
Hydraulic medium	:	Mineral oil.
Temperature range	:	-20°C to + 80°C.
Viscosity range	:	10 cSt to 380 cSt.
Fluid cleanliness required	:	ISO 4406 20/18/15 or better.
Max. flow handling capacity	:	80 l/min.
Mass approx.	:	2.05 Kg.

polyhydron pvt. ltd.

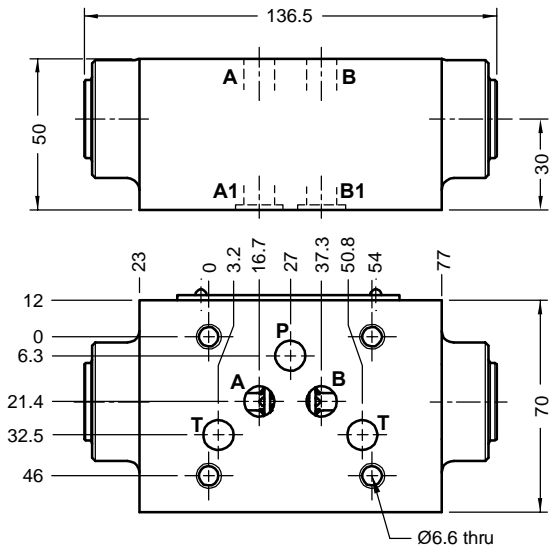
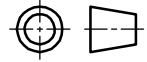
78-80, Machhe Industrial Estate,
Machhe, Belgaum - 590 014. INDIA.

Phone : +91-(0)831- 2411001
Fax : +91-(0)831- 2411002
E-mail : polyhydron@gmail.com
Website : www.polyhydron.com

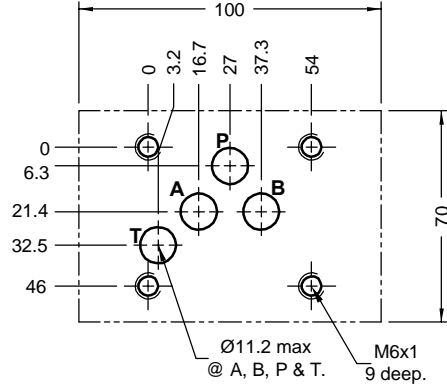


Unit dimensions

Dimensions in mm.



Subplate mounting interface as per ISO 4401.



Note: Valve fixing S.H.C Screws are not in scope of supply.
Tightening torque for S.H.C Screws is 16 Nm.

Ordering code

CIM 10 AB 1 - 22

Pilot operated check valve modular construction

Size 10

Design code subjected to Change .
installation dimensions remain same for design code 20 thru 29.

Pilot optd. check facility	
On A & B ports	AB
On 'A' port only	A
On 'B' port only	B

Cracking pressure	
1	1.0 bar
3	3.0 bar
5	5.0 bar