



A Polyhydon Group Company

PRESSURE CONTROL MODULE PCM 06-06

ENGINEERING

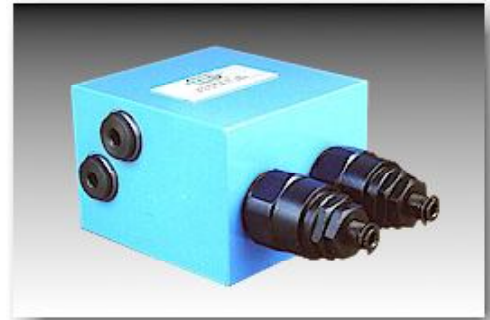
1 of 2

Ref. No. D03645

Release 01 / 2014

Description

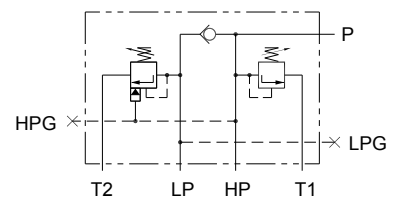
Designed to control double pumps of a Hi-Low system. Unloads low pressure pump when system pressure rises above the pressure set on unloader valve. Relieves high pressure pump when system pressure reaches the value.



Connection details.

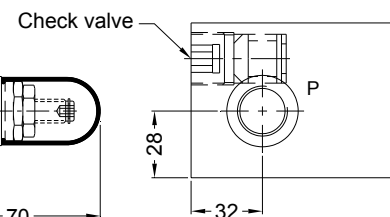
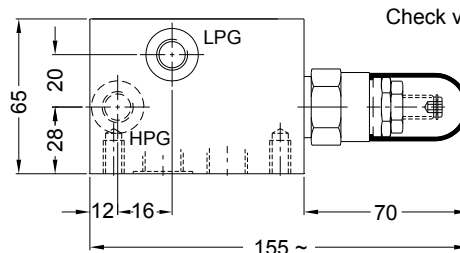
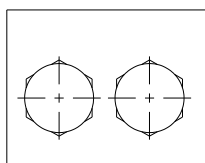
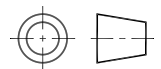
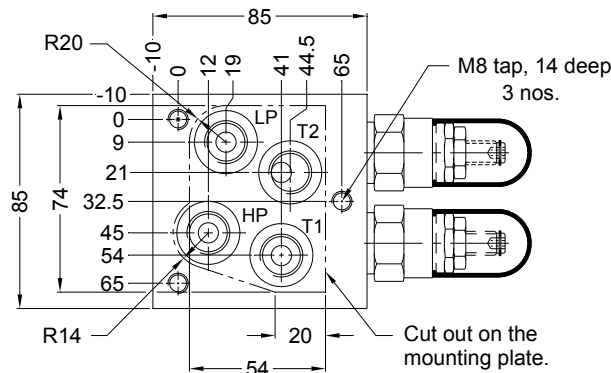
- P Out let connection.
- LPG Gauge connection on low pressure pump line.
- HPG Gauge connection on high pressure pump line.
- HP High pressure pump connection.
- T1 Tank connection high pressure.
- LP Low pressure pump connection.
- T2 Tank connection low pressure.

Hydraulic Symbol

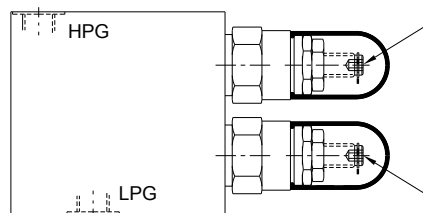


Unit dimensions

Dimensions in mm.



Port details.	
HP	- G3/8
LP	- G3/8
P	- G1/2
HPG	- G1/4
LPG	- G1/4
T1	- G3/8
T2	- G3/8



High pressure pump relief valve
Pressure adjusting screw.

Low pressure pump unloader valve
Pressure adjusting screw.

Polyhydon Pvt. Ltd.

78-80, Machhe Industrial Estate,
Machhe, Belgaum - 590 014. INDIA.

Phone : +91-(0)831-2411001
Fax : +91-(0)831-2411002
E-mail : polyhydon@gmail.com
Website : www.polyhydon.com



A Polyhydron Group Company

PRESSURE CONTROL MODULE PCM 06-06

ENGINEERING

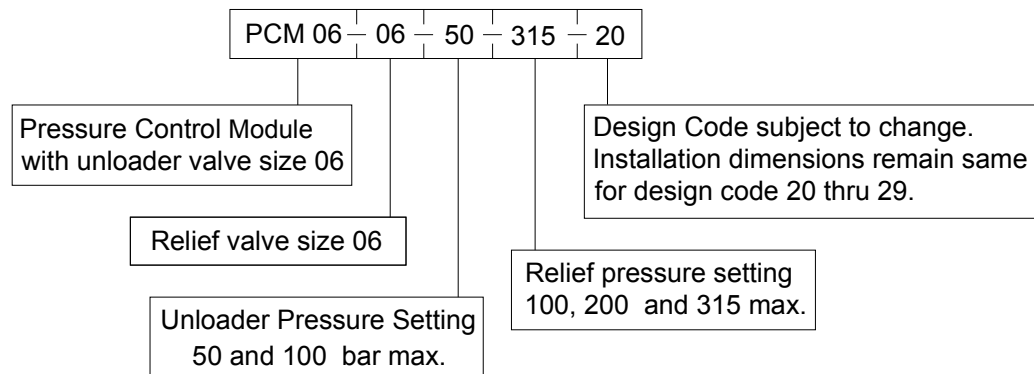
2 of 2

Ref. No. D03645

Technical specifications

Construction.....	Direct acting poppet type high pr. relief valve. Direct acting spool type low pr. unloading valve.						
Mounting	Threaded body (Factory standard)						
Mounting position	Optional						
Direction of flow	As per hydraulic symbol.						
Operating pressure	For low pr. pump port 100 bar max. For high pr. pump port 100, 200 and 315 bar.						
Hydraulic medium	Mineral oil.						
Viscosity range	10 cSt to 380 cSt.						
Fluid temperature range	-20°C to +70°C.						
Fluid cleanliness requirement	ISO 4406 20/18/15 or better.						
Flow handling capacity	<table border="1"> <thead> <tr> <th>Model</th> <th>High pressure max.</th> <th>Low pressure max.</th> </tr> </thead> <tbody> <tr> <td>PCM 06-06</td> <td>25 l/min.</td> <td>25 l/min</td> </tr> </tbody> </table>	Model	High pressure max.	Low pressure max.	PCM 06-06	25 l/min.	25 l/min
Model	High pressure max.	Low pressure max.					
PCM 06-06	25 l/min.	25 l/min					
Mass	1.75 kg APPROX.						

Ordering code



All rights reserved.
Subject to revision.