



**COVER FOR 2 MANUAL
PRESSURE SETTING,
ELECTRICALLY SELECTABLE
CVC*-2RS***

ENGINEERING

1

Ref. No. P07032
Release 08/2002

Description

Designed to control opening & closing of the cartridge valve.

Provision for remote control.

Two built in relief valves & one solenoid directional control valve.

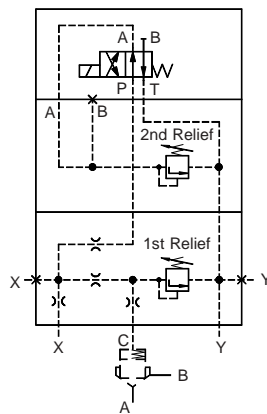
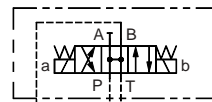
This cover can be used to relieve cartridge valve at two different pressure setting, which can be electrically selected.

By using double solenoid with appropriate configuration, the valve can be made to unload in the normal position.

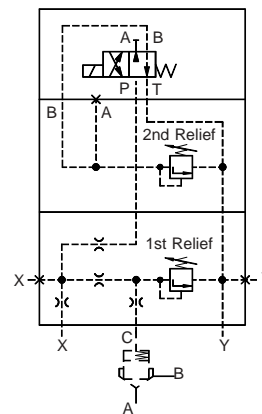


Hydraulic symbol

For unloading normal position



CVC*-2RSA*-*-*



CVC*-2RSB*-*-*

Note : Cover is provided with Solenoid mounting provision

Polyhydron Pvt. Ltd.
78-80, Machhe Industrial Estate,
Machhe, Belgaum - 590 014. INDIA.

Phone : +91-(0)831-411001
Fax : +91-(0)831-411002
E-mail : polyhydron@vsnl.com
Website : www.polyhydron.com



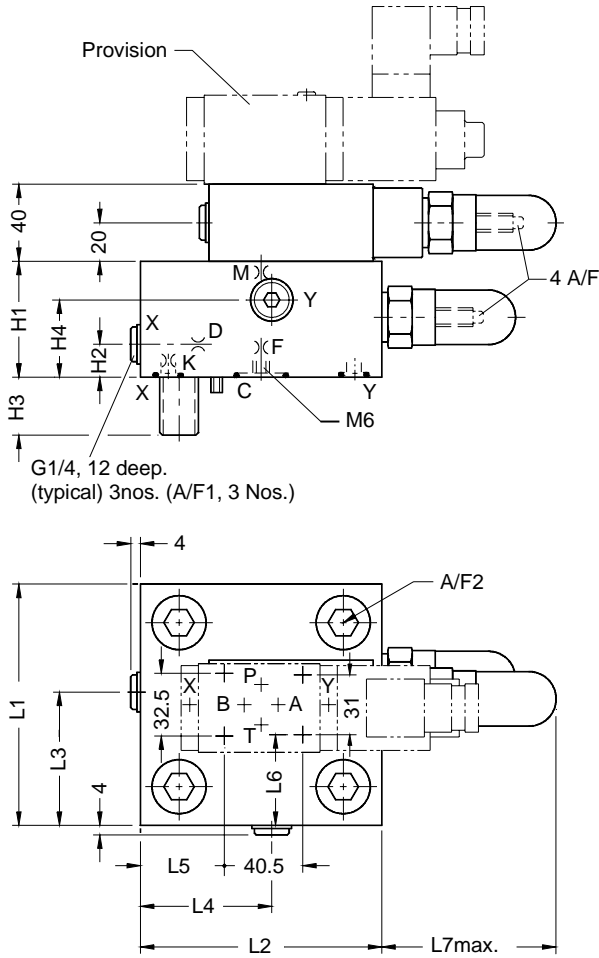
**COVER FOR 2 MANUAL
PRESSURE SETTING,
ELECTRICALLY SELECTABLE
CVC*-2RS***

ENGINEERING

2

Ref. No. P07032

Unit dimension



Dimensions in mm.

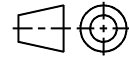


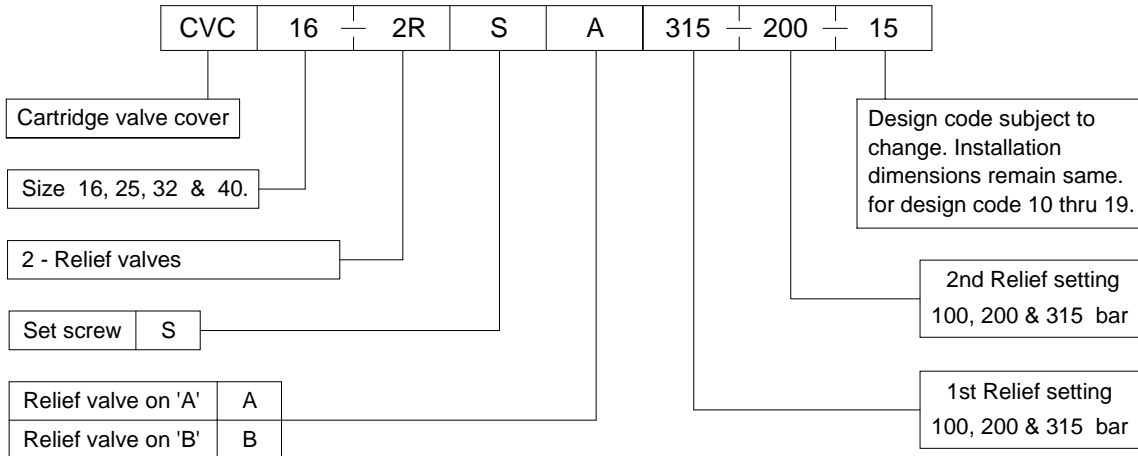
Table 1

Size	16	25	32	40
H1	40	40	50	60
H2	17	19	26	17
H3	12	18	24	30
H4	28	28	37	40
L1	65	85	102	125
L2	80	85	102	125
L3	36.5	49	56.5	69
L4	35	36	57	68
L5	7	8	30	43.5
L6	17	27	34.5	47
L7	100	96	100	90
K	0.8	0.8	0.8	--
F	1	1	1.2	1.2
M	1	1	1	1.2
D	0.8	0.8	1	1
A/F1	6	6	6	6
A/F2	6	10	14	17

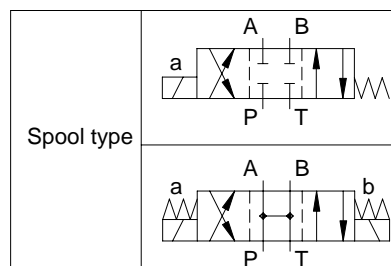
Size	S.H.C. Screws 4 nos. (10.9)	Torque da Nm
16	M8 x 40 L	3.2
25	M12 x 45 L	11
32	M16 x 55 L	27
40	M20 x 70 L	52

Note : Mounting interface as per ISO 7368.

Ordering code



Note : Solenoid (refer spool type) to be ordered seperately.





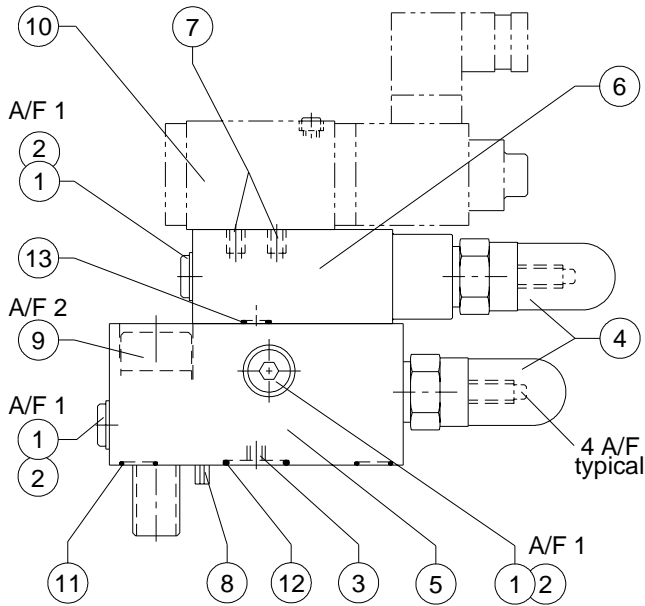
**COVER FOR 2 MANUAL
PRESSURE SETTING,
ELECTRICALLY SELECTABLE
CVC*-2RS***

SERVICE

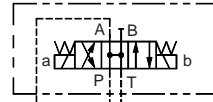
3

Ref. No. P07032

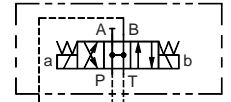
Part details & list



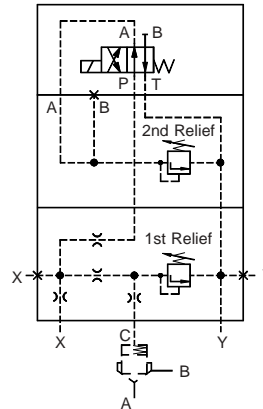
Hydraulic symbol



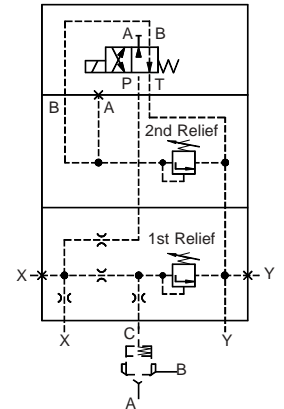
CVC*-2RSA*-*U**



CVC*-2RSB*-*U**



CVC*-2RSA*-****



CVC*-2RSB*-****

Sl.no.	Description	Qty	Size 16	Size 25	Size 32	Size 40
1	Socket head plug	3	G 1/4	G 1/4	G 1/4	G 1/4
2	Bonded seal	3	G 1/4	G 1/4	G 1/4	G 1/4
3	Provision for orifice	4	M6x10 deep	M6x10 deep	M6x10 deep	M6x10 deep
4	Relief cartridge	2	DPRS06K*	DPRS06K*	DPRS06K*	DPRS06K*
5	Cover	1	--	--	--	--
6	Sandwich block	1	--	--	--	--
7	Provision for plug	2	M6x10 deep	M6x10 deep	M6x10 deep	M6x10 deep
8	Dowel pin	1	--	--	--	--
9	S.H.C.Screw (12.9)	4	M8x1.25	M12x1.75	M16x2	M20x2.5
10	Soln. D.C.Valve	1	--	--	--	--
11	O' Ring	2	7.5 x 1.8	9.25 x 1.8	10.6 x 1.8	12.5 x 1.8
12	O' Ring	1	12.5 x 1.8	15.55 x 2.62	20 x 2.65	23 x 2.65
13	O' Ring	4	8.5 x 1.8	8.5 x 1.8	8.5 x 1.8	8.5 x 1.8

Tools required

A/F1	Wrench key	6	6	6	6
A/F2	Wrench key	6	10	14	17

Note :

* Recommended seal kit.

While ordering the individual spares / seal kit, give part no. & complete details of model code as on the label.



COVER FOR 2 MANUAL
PRESSURE SETTING,
ELECTRICALLY SELECTABLE
CVC*-2RS*

SERVICE

4

Ref. No. P07032

All rights reserved.
Subject to revision.