



# COUNTER BALANCE VALVE CB (Design Series 30)

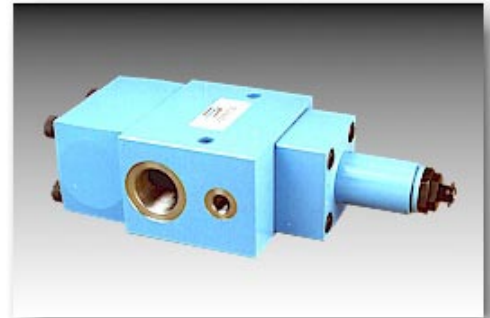
ENGINEERING

1

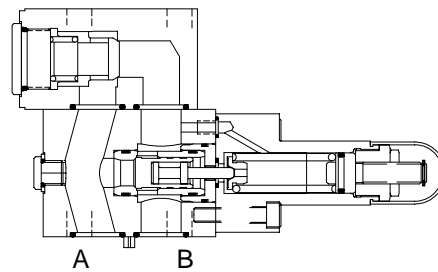
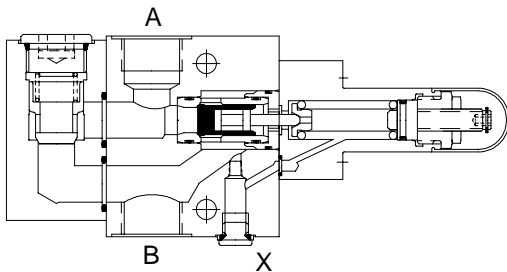
Ref. No. P03449  
Release 10/2003

## Description

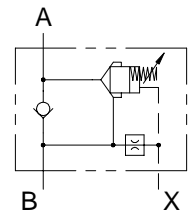
Counter balance valves are seat type valves. They offer free-flow from their port B to A and give leak free closure in opposite direction upto a predetermined pressure. This predetermined cracking pressure can be adjusted within its maximum specified range. For higher cracking pressure or external leakage drain, Port X can be used.



## Section



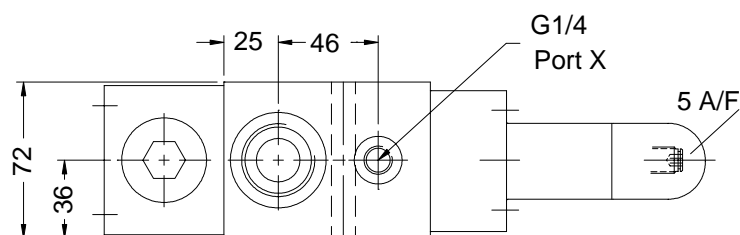
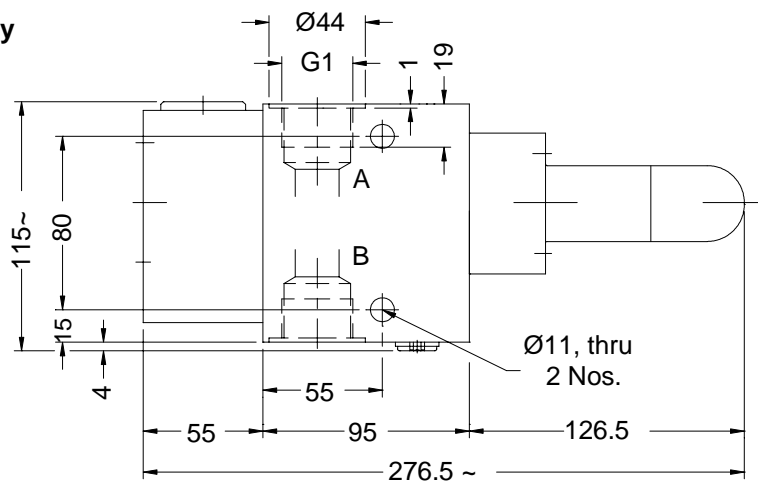
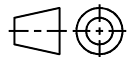
Hydraulic Symbol



## Unit Dimensions

Valve : Threaded body

Dimensions in mm.



**Polyhydron Pvt. Ltd.**  
78-80, Machhe Industrial Estate,  
Machhe, Belgaum - 590 014. INDIA.

**Phone** : +91-(0)831-2411001  
**Fax** : +91-(0)831-2411002  
**E-mail** : polyhydron@vsnl.com  
**Website** : www.polyhydron.com



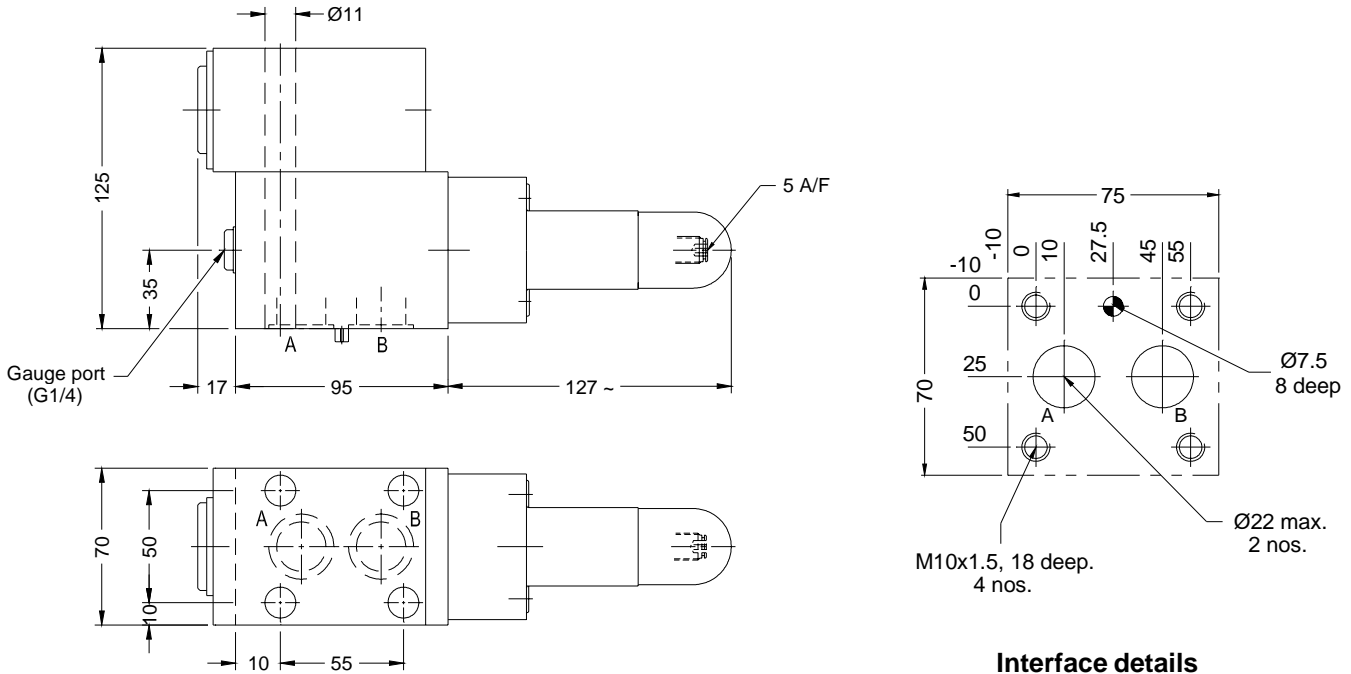
# COUNTER BALANCE VALVE CB (Design Series 30)

ENGINEERING

2

Ref. No. P03449

## Valve : Subplate body



**Interface details**

## Technical Specifications

Construction .....	Direct acting, seat type.
Mounting type .....	Threaded port body and Subplate body
Mounting position .....	Optional
Direction of flow .....	Free flow port B to A. Counter balance A to B.
Operating pressure .....	315 bar.
Cracking pressure .....	Refer ordering code.
Hydraulic medium .....	Mineral oil.
Viscosity range .....	10 cSt to 380 cSt.
Fluid temperature range .....	-20 °C to +70 °C
Fluid cleanliness requirement .....	As per ISO 16/13 or better.
Flow handling capacity .....	200 lpm max.
Mass .....	Threaded body ---- 12 kg. APPROX Subplate body ---- 12 kg. APPROX



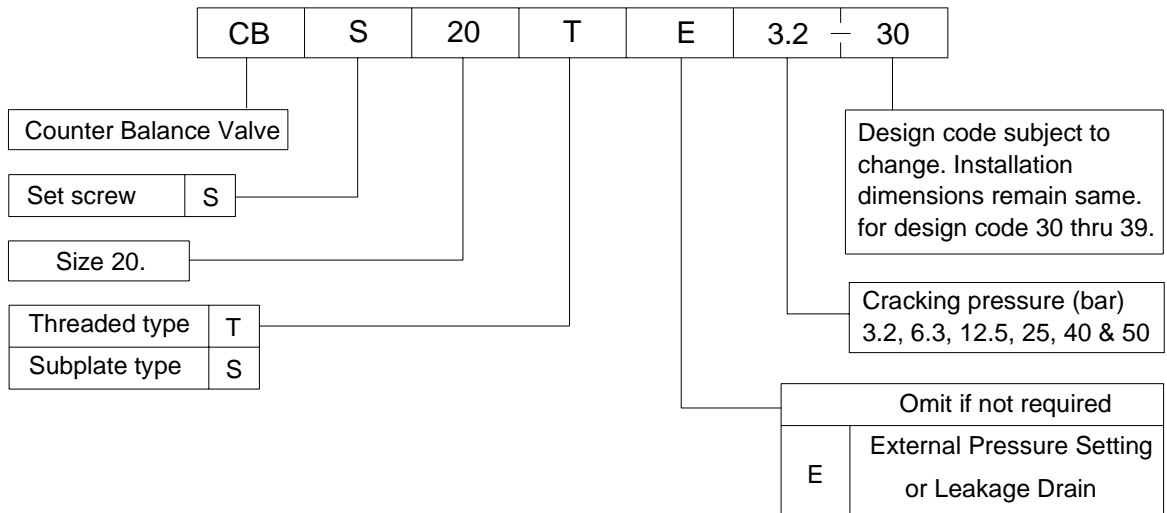
COUNTER BALANCE VALVE  
CB (Design Series 30)

ENGINEERING

3

Ref. No. P03449

Ordering Code





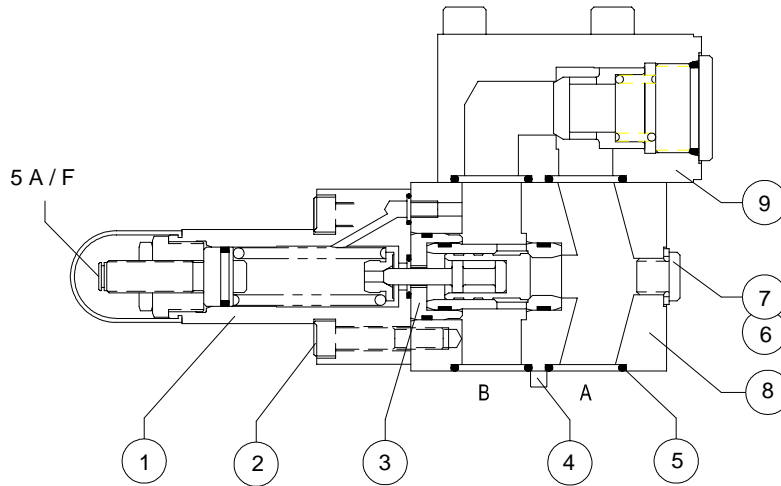
# COUNTER BALANCE VALVE CB (Design Series 30)

SERVICE

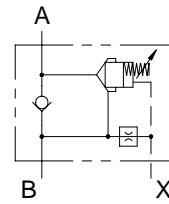
4

Ref. No. P03449

## Sectional View and Spare parts detail



Hydraulic Symbol



Sl.no.	Description	Qty.
1	High cracking cover	1
2	S.H.C.Screw	1
3	Cartridge valve	1
4	Spring dowel	1
* 5	O'ring ( 24 id x 3 csd )	2
6	Plug	1
7	Bonded seal	1
8	Body	1
9	Check valve	1

Note : \* Recommended seal kit. \* & □ Recommended spare kit.  
While ordering the individual spares / seal kit / spare kit give part.no.  
and complete details of model code as punched on the pump body.