

## Double Locking Check Valve

These Check Valves are flow in one direction and pressure flow in reverse direction, until operated by pilot operated pressure to allow reverse flow. The specific cracking pressure required to open the valve to allow free flow direction.



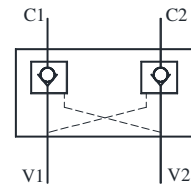
## Specifications

| Model Number | Max. Flow L/min. | Max. Operating Pressure Kg/cm <sup>2</sup> | Min. Required Pilot Pressure Kg/cm <sup>2</sup> | Mass Kg |
|--------------|------------------|--|---|---------|
| DLCV-03B-10  | 30               | 160  | 22~28   | 1.05    |

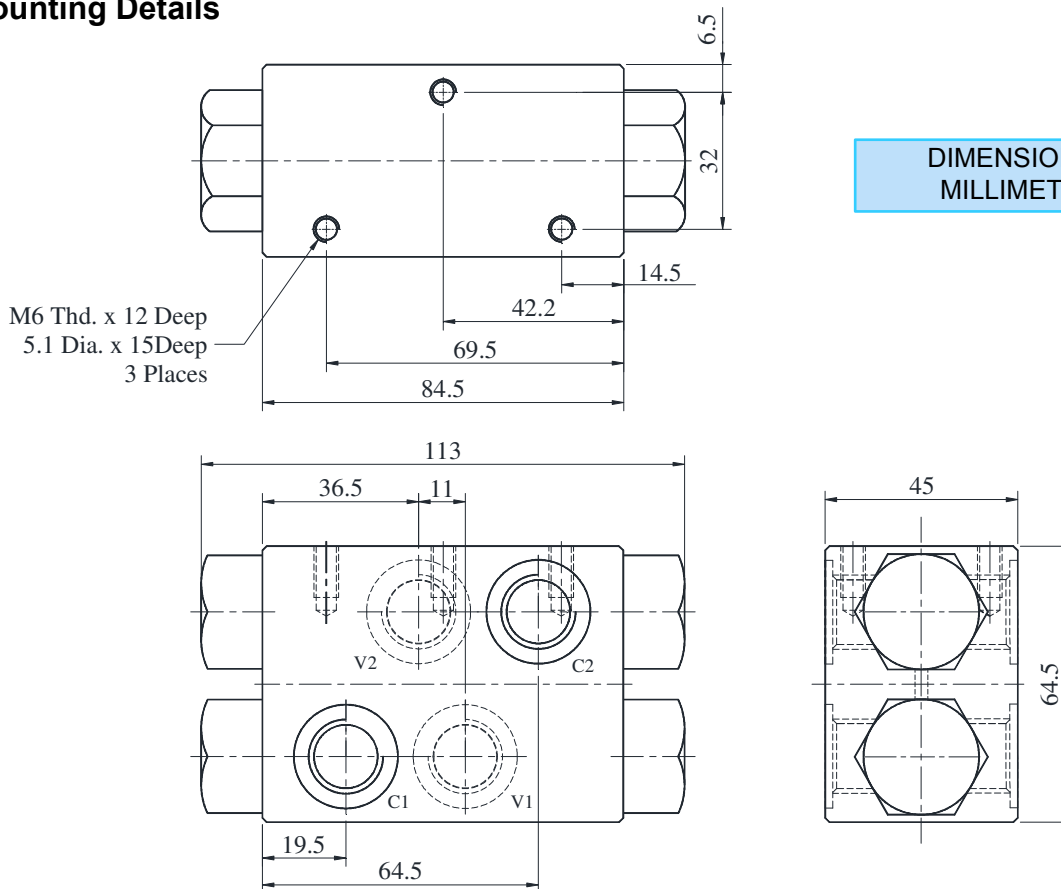
## Model Number Designation

| DLCV                       | -03       | B               | -10           |
|----------------------------|-----------|-----------------|---------------|
| Series Number              | Port Size | Port Thread     | Design Number |
| Double Locking Check Valve | 03 - 3/8" | B - BSPP (STD.) | 10            |

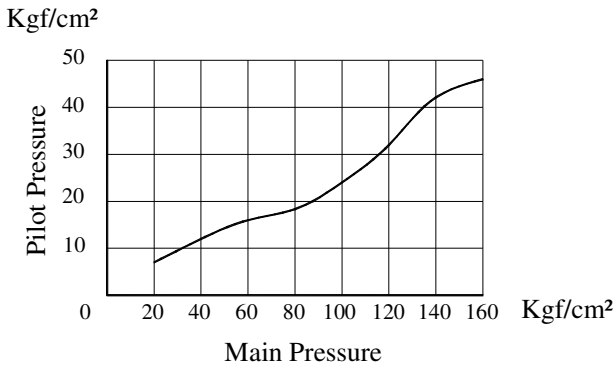
## Graphic Symbol



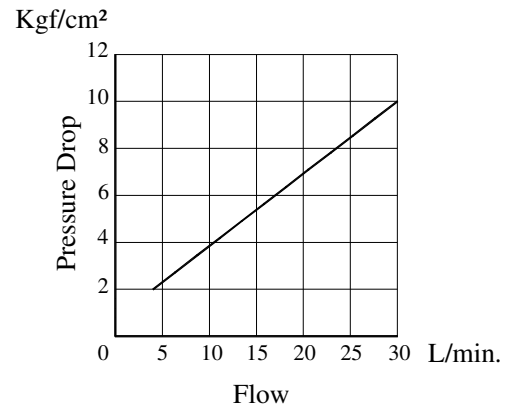
## Mounting Details



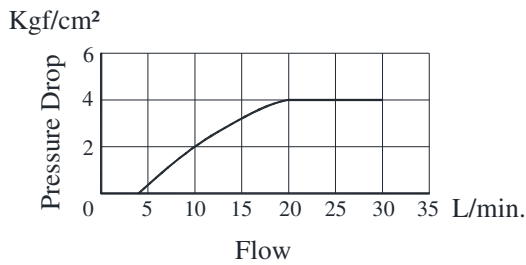
**Minimum Pilot Pressure Characteristics Curve**



**Pressure Drop vs. Free Flow**



**Pressure Drop vs. Reverse Free Flow**



**Spare Parts List**

● **List of Seals**

| Sl.No. | Name of Parts | Part Numbers | Qty. |
|--------|---------------|--------------|------|
| 1      | O-Ring        | SO-NB-P18    | 4    |

Note: When ordering the seals, please specify the Seal Kit number from the table below.

● **List of Seal kits**

| Model Numbers | Seal Kit Numbers |
|---------------|------------------|
| DLCV-03B-10   | KS-DLCV-03-10    |

**Hydraulic Fluids**

● **Cleanliness**

Contamination level should be within NAS class 10. Use of 100µm (150 mesh) tank filter on suction side, above 50mm away from the tank bottom.