



PILOT OPERATED CHECK VALVE
MODULAR CONSTRUCTION
CIM 06

ENGINEERING

1

Ref. No. P05975
Release 10/2001

Description

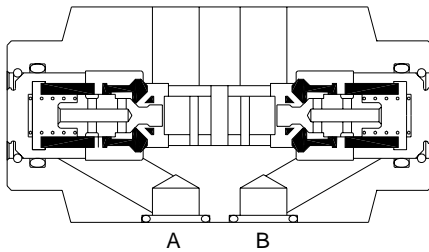
These modular valves are available with the pilot operated check valve facility on either 'A' or 'B' ports. The hydraulic opening operation for free flow in reverse direction is achieved by means of internal pilot pressure available from the other working port.

Interface conforming to
ISO 4401-AB-03-04-A
IS 10187
DIN 24340

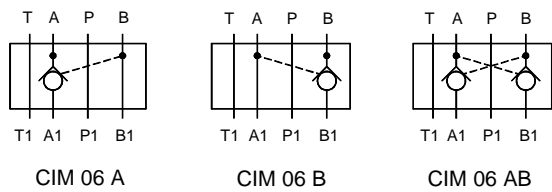
To ensure proper closure of both valve poppets, both user connections should be unloaded when the control valve is in the neutral by connecting with the return line.



Section

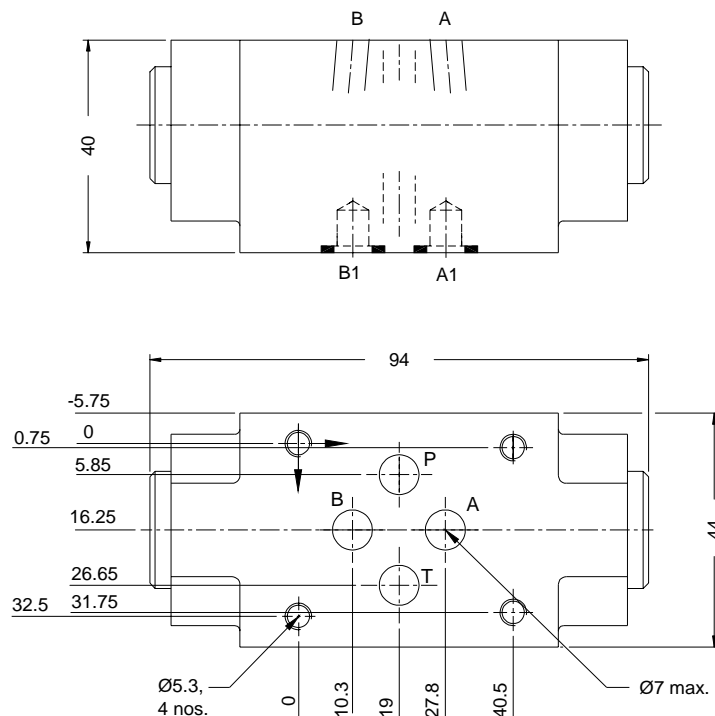


Hydraulic symbol



Unit dimension

Dimensions in mm.



Polyhydron Pvt. Ltd.
78-80, Machhe Industrial Estate,
Machhe, Belgaum - 590 014. INDIA.

Phone : +91-(0)831-411001
Fax : +91-(0)831-411002
E-mail : polyhydron@vsnl.com
Website : www.polyhydron.com



**PILOT OPERATED CHECK VALVE
MODULAR CONSTRUCTION
CIM 06**

ENGINEERING

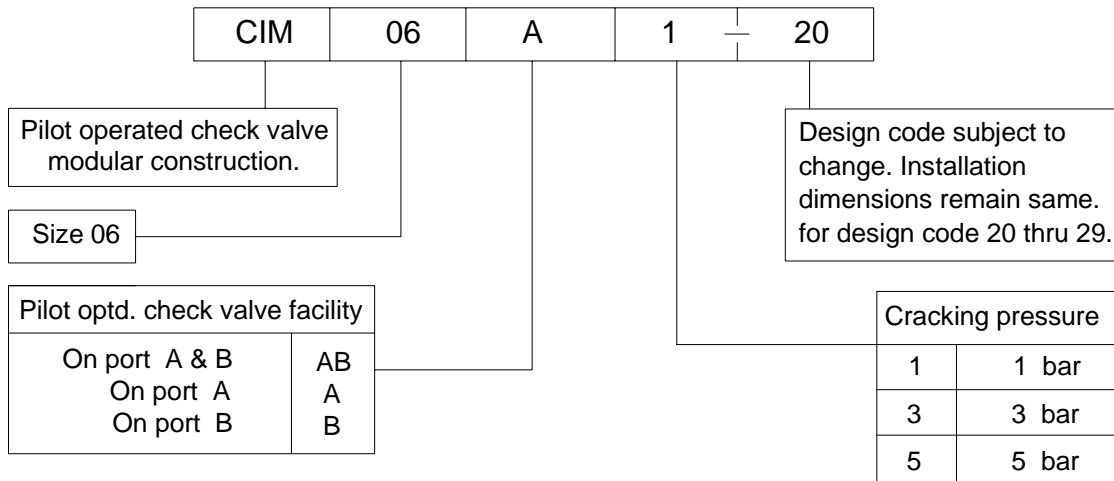
2

Ref. No. P05975

Technical specification

Construction	Modular, Seat type, Internally pilot operated.
Mounting	Modular type, conforming to IS 10187 ISO 4401-AB-03-04-A DIN 24340
Mounting position	Optional.
Direction of flow	Free flow from port A to A1 and/or from B to B1. Piloted open flow in opposite direction.
Operating pressure	315 bar for all ports.
Cracking pressure	1, 3 and 5 bar.
Area ratio - Pilot piston : Poppet seat	2.6 : 1
Viscosity range	10 cSt to 380 cSt.
Fluid temperature range	-10 °C to +80 °C
Nominal flow handling capacity	35 l/min.
Mass	0.86 kg.

Ordering code



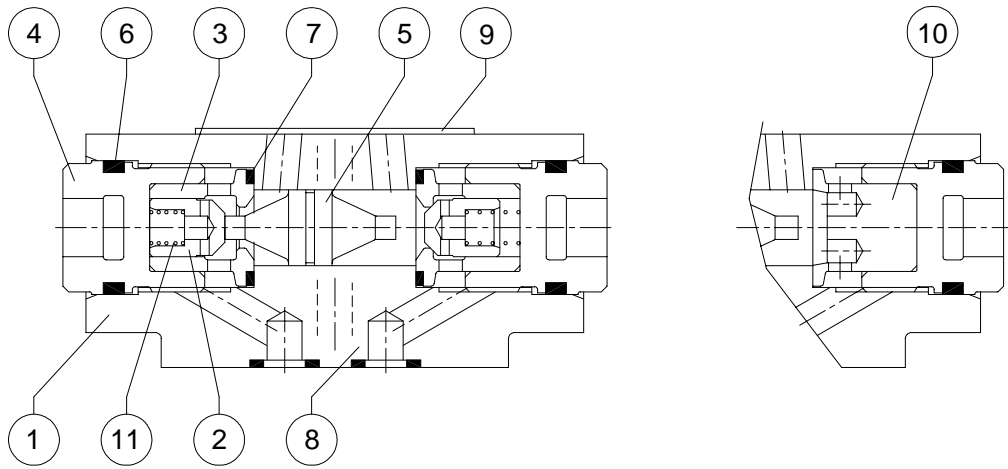


PILOT OPERATED CHECK VALVE
MODULAR CONSTRUCTION
CIM 06

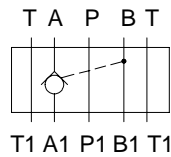
SERVICE

3

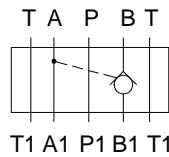
Ref. No. P05975



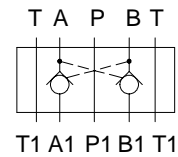
Hydraulic Symbol



CIM 06A



CIM 06B



CIM 06 AB

Part no.	Description	Qty.
1	Body	1
2	Poppet	2
3	Seat	2
4	End plug	2
5	Piston	2
6	O'ring (Nitrile) 18 id. x 2.65 csd.	2
7	O'ring (Nitrile) 15 id. x 1.8 csd.	2
8	O'ring (Nitrile) 8.5 id. x 1.8 csd.	4
9	Lable	1
10	Stopper (A&B model)	1
11	Spring 1 bar	2
	Spring 3 bar	2
	Spring 5 bar	2

Note :

Qty. in brackets are for model CIM 06A and CIM 06B only.

* Recommended spares.

While ordering spares give complete details as on the label.



PILOT OPERATED CHECK VALVE
MODULAR CONSTRUCTION
CIM 06

SERVICE

4

Ref. No. P05975

All rights reserved.
Subject to revision.