



THROTTLE / CHECK VALVE MODULAR CONSTRUCTION TCM 10

ENGINEERING

1

Ref. No. P04546

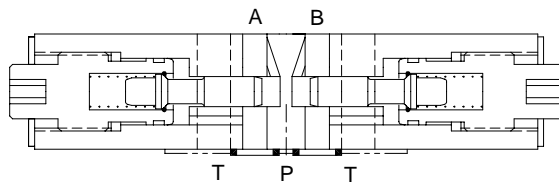
Release 11/2001

Description

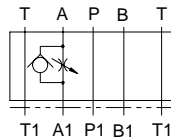
Double Throttle / Check Valve.
Non pressure compensated, Modular construction.
Can be used for METER - OUT or METER - IN applications.
Interface conforming to ISO, IS & DIN.



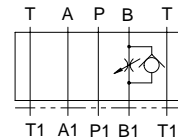
Section



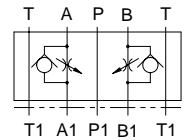
Hydraulic Symbol



TCM10 A

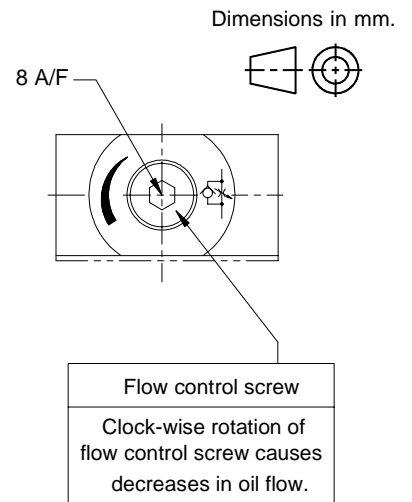
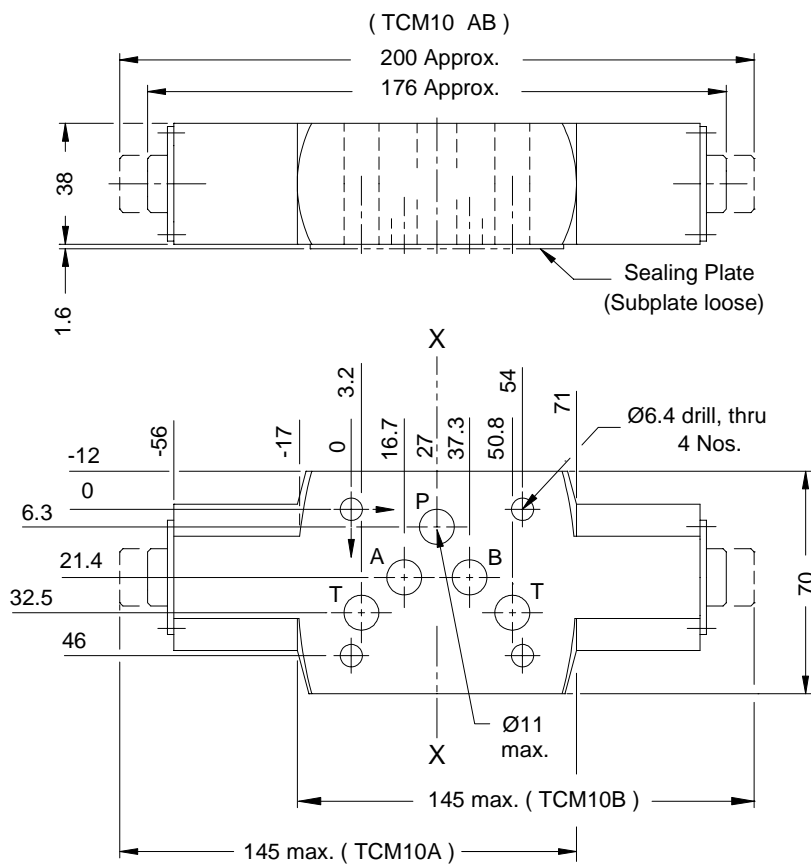


TCM10 B



TCM10 AB

Unit dimension



Note : Rotate valve around axis 'X' - 'X' 180° to convert from
METER - OUT - CONTROL to METER - IN CONTROL. (Port A & B get interchanged)

Polyhydron Pvt. Ltd.
78-80, Machhe Industrial Estate,
Machhe, Belgaum - 590 014. INDIA.

Phone : +91-(0)831-411001
Fax : +91-(0)831-411002
E-mail : polyhydron@vsnl.com
Website : www.polyhydron.com



**THROTTLE / CHECK VALVE
MODULAR CONSTRUCTION
TCM 10**

ENGINEERING

2

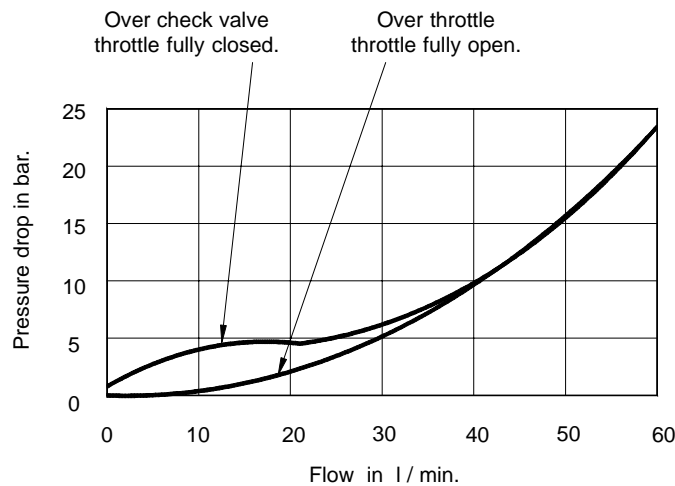
Ref. No. P04546

Technical specification

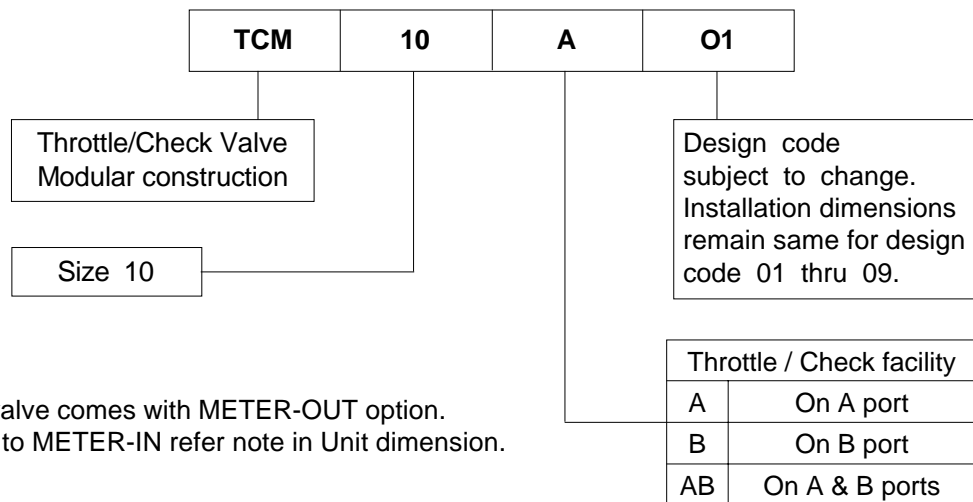
Construction Modular, Spool type, Non-pressure compensated.
 Mounting Modular type, Conforming to IS 10187,
 ISO 4401 - AC - 05 - A - A,
 DIN 24340.
 Mounting position Optional.
 Direction of flow For ports P & T Free flow in either direction.
 For ports A & B Free flow in one direction.
 Adjustable throttled flow in opposite direction as
 indicated on the valve dial plate.
 Operating pressure 315 bar for all ports.
 Viscosity range 10 cSt to 380 cSt.
 Fluid temperature range -10 °C to +80 °C.
 Flow handling capacity Refer graph.
 Mass 2.4 kg.

Performance curves

Oil used : ISO VG 68, Viscosity : 68 cSt @ 40 °C, Temp @ test : 50 °C.



Ordering code



Note : Standard valve comes with METER-OUT option.
 To convert to METER-IN refer note in Unit dimension.



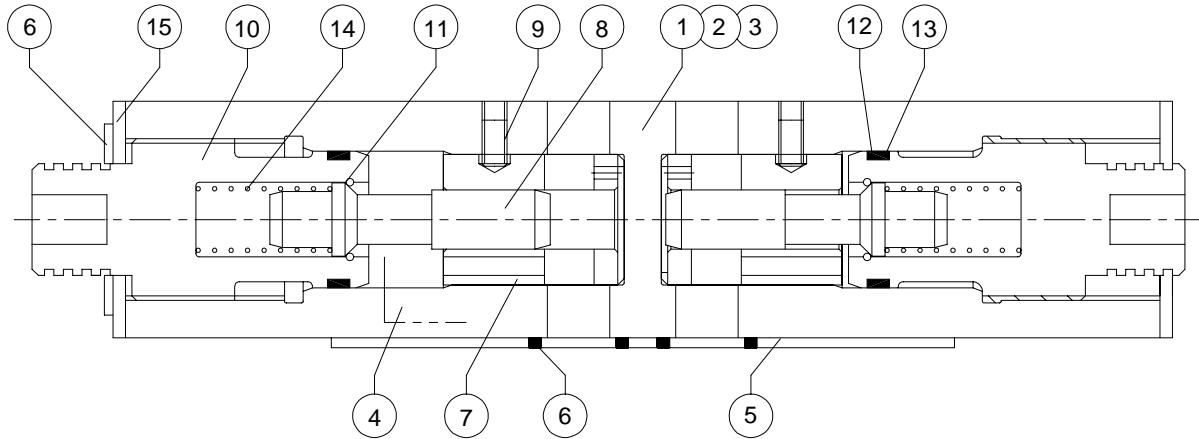
THROTTLE / CHECK VALVE
MODULAR CONSTRUCTION
TCM 10

SERVICE

3

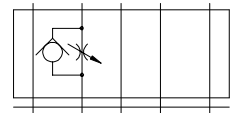
Ref. No. P04546

Sectional View & Parts List



Hydraulic Symbol

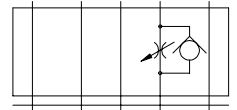
T A P B T



T1 A1 P1 B1 T1

TCM10 A

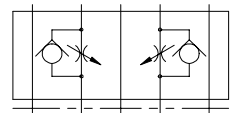
T A P B T



T1 A1 P1 B1 T1

TCM10 B

T A P B T



T1 A1 P1 B1 T1

TCM10 AB

Part no.	Sl.No.	Description.	Qty.
42201	01	Body TCM10AB	1
42202	02	Body TCM10A	1
42203	03	Body TCM10B	1
42204	04	Lable	1
42205	05	Sealing Plate	1
42206	* 06	O'Ring (12 id x 2 csd.)	4
42207	07	Throttle Bush	1
42208	08	Spool	1
42209	09	Grub Screw	1
42210	10	Adjusting Screw	1
42211	11	Spring Ring (10.8 x1.2 csd)	1
42212	*12	O'Ring (19 di x 1.8 csd.)	1
42213	13	Backup Ring (19.2 idx21.98 odx2 Th.)	1
42214	14	Spring	1
42215	15	Symbol Plate	1
42216	16	CRPH Screw M 3 x 6 Long	4
42299	99	Interface Cap	1

Note : * Recommended spare kit.

While ordering the individual spares / spare kit / give part no. and complete details of model code as on the label.



THROTTLE / CHECK VALVE
MODULAR CONSTRUCTION
TCM 10

SERVICE

4

Ref. No. P04546