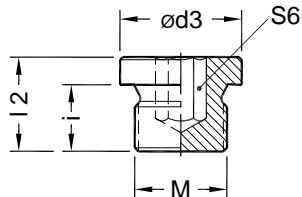


Socket head Plug

Male thread : Metric (M) - ISO 261



Part No.	Working Pressure (bar)	M Male thread Metric	$\varnothing d_3$	i	l 2	S 6	Tightening Torque N-m
VSTIM10	400	M10 x 1.0	14	8	12.3	5	12
VSTIM12	400	M12 x 1.5	17	12	17.3	6	25
VSTIM14	400	M14 x 1.5	19	12	17.3	6	35
VSTIM16	400	M16 x 1.5	22	12	17.3	8	50
VSTIM18	400	M18 x 1.5	24	12	17.3	8	60
VSTIM20	400	M20 x 1.5	26	14	19.3	10	70
VSTIM22	400	M22 x 1.5	27	14	19.3	10	80
VSTIM26	160	M26 x 1.5	32	16	21.3	12	120
VSTIM27	400	M27 x 2.0	32	16	21.3	12	135
VSTIM33	400	M33 x 2.0	40	16	22.8	17	225
VSTIM42	250	M42 x 2.0	50	16	22.8	22	360
VSTIM48	250	M48 x 2.0	55	16	22.8	24	400